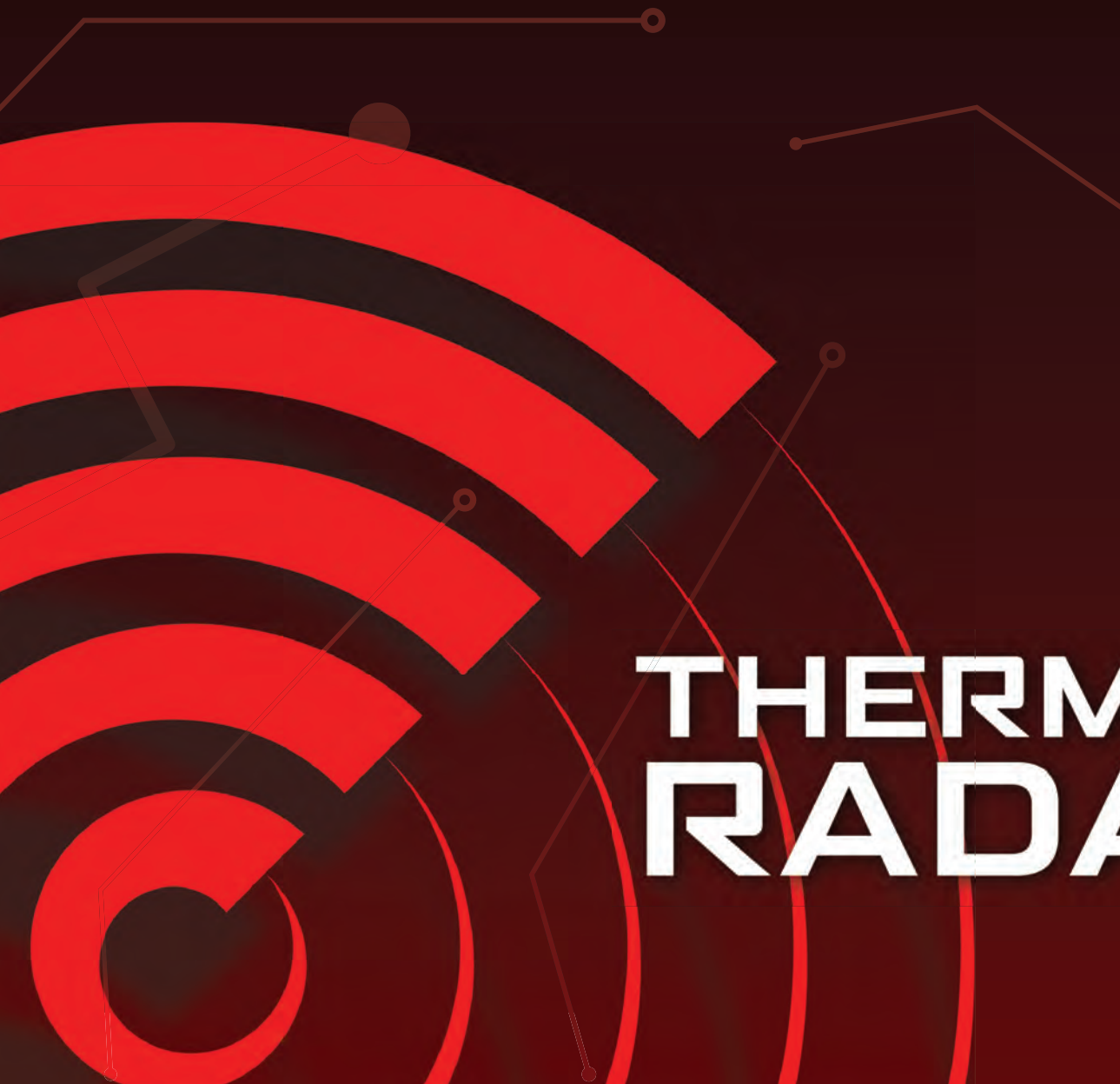


360° PERIMETER DETECTION

CONTINUOUS & COST-EFFECTIVE

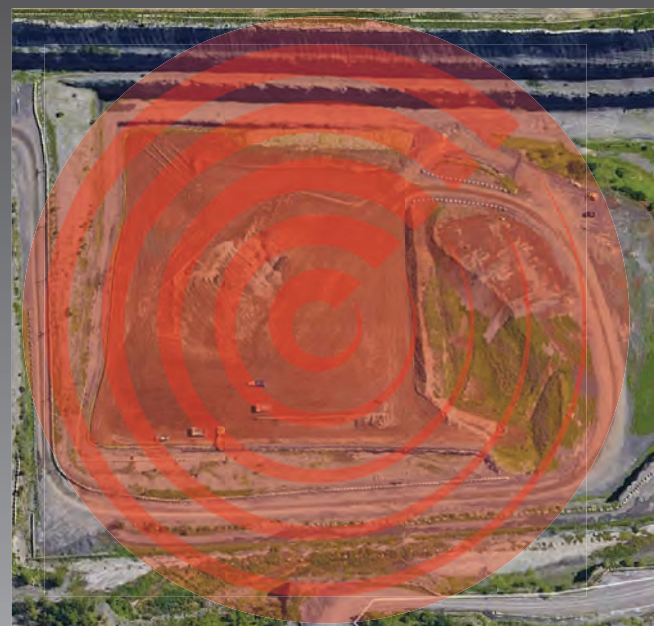
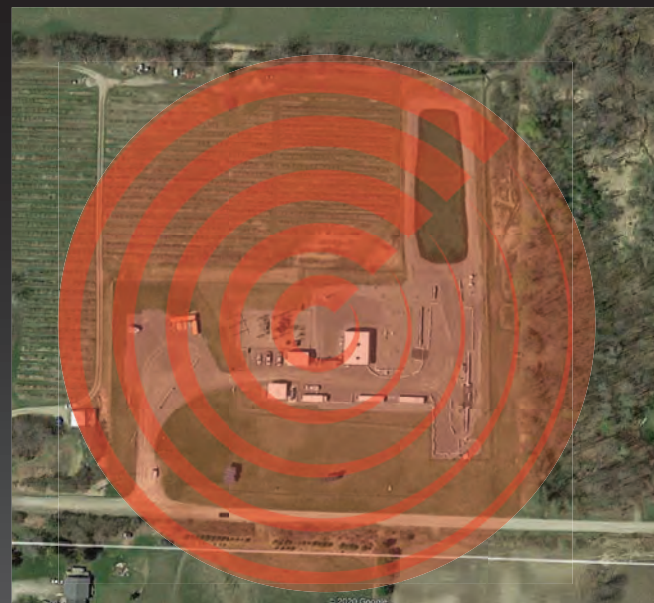


THERMALTM RADAR



THE THERMAL RADAR™ DIFFERENCE

- Provides slew-to-cue functionality to an integrated PTZ
- Edge analytics for human, vehicle and fire detection
- Geospatial location-based detection alerts
- Patent-pending GUI feed displaying full 360° coverage area
- Independent customizable areas of interest / detection zones
- Passive thermal detection and surveillance solution
- No export license required for most international applications
- Reduces device count, infrastructure and licensing costs
- Proprietary adaptive analytics result in low false-positive alerts
- Simultaneous detection of multiple targets



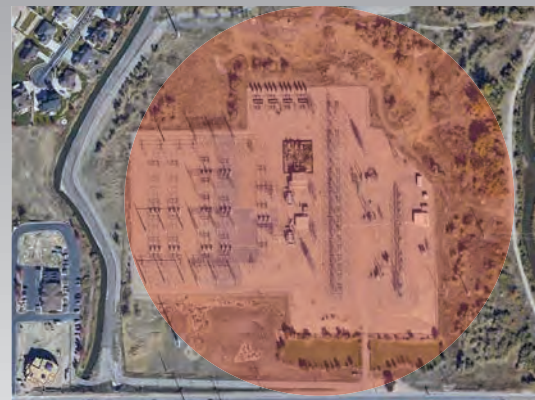
Traditional Perimeter Coverage

8 Fixed Cameras



Thermal Radar™ Coverage

1 Thermal
Radar™



Thermal Radar™ provides superior perimeter protection. Decreasing the costs of installation, monitoring, licensing, and maintenance.

INTEGRATIONS

Hydra™ combines Thermal Radar™ with a PTZ for unparalleled situational awareness



Hydra™ Integrated PTZs

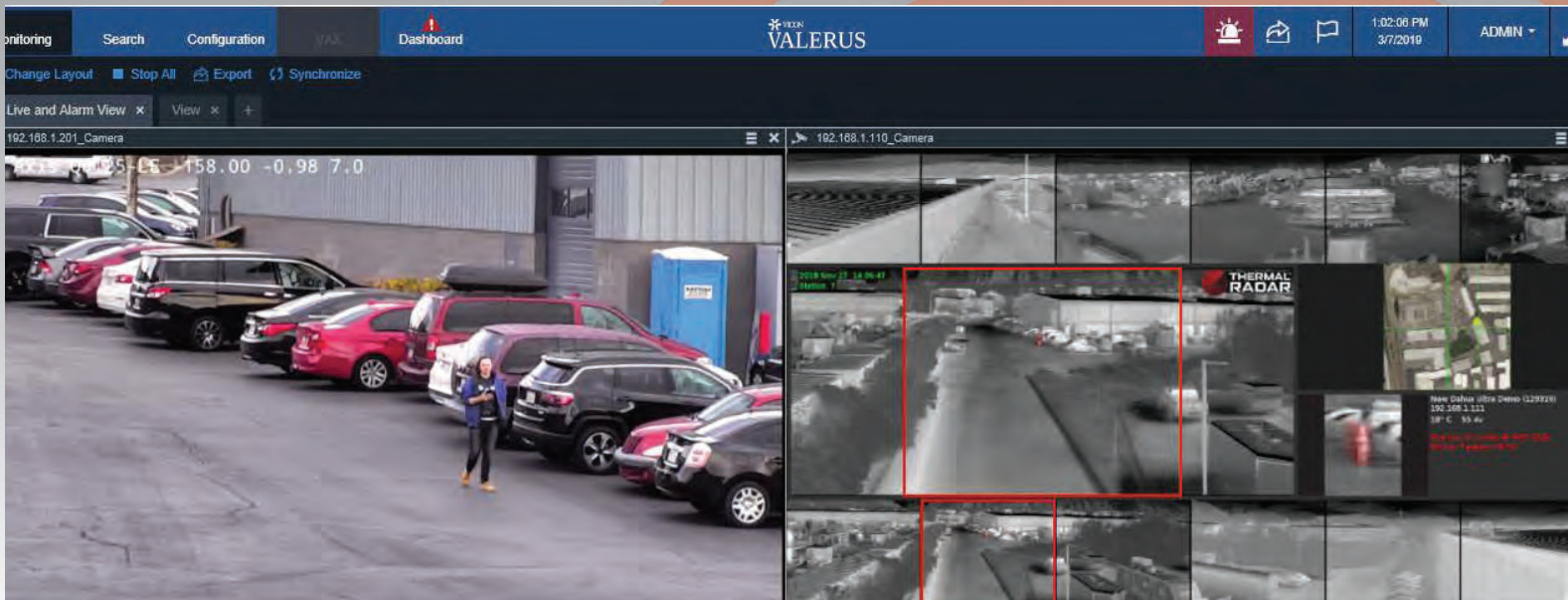
- Hanwha
- Bosch
- Vicon
- Axis
- Panasonic
- Sony
- Dahua
- Hikvision



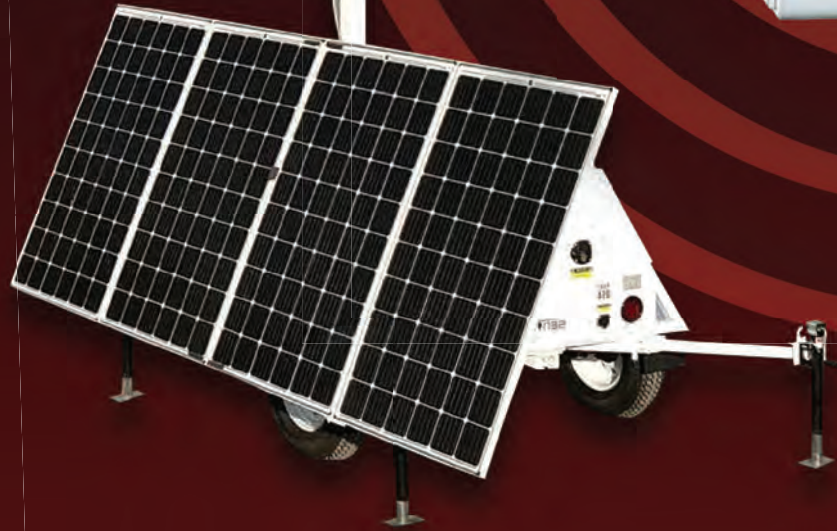
Integrated Platforms

- Valerus
- Genetec
- Milestone
- Avigilon
- Exacq
- Digital Watchdog
- Wisenet
- Redvision
- ONSSI
- NiceVision
- Dahua
- Network Optix

MONITORING EXAMPLE IN VALERUS VMS



DEPLOYMENT OPTIONS



sales@thermalradar.com
801.762.6800
thermalradar.com

info@mobilecamerasecurity.com
+61 419.633.723
mobilecamerasecurity.com

